



WI-PS310GF-I V2
8GE+2Combo SFP Fiber Ports Industrial
PoE Switch with 8-Port PoE
Data sheet

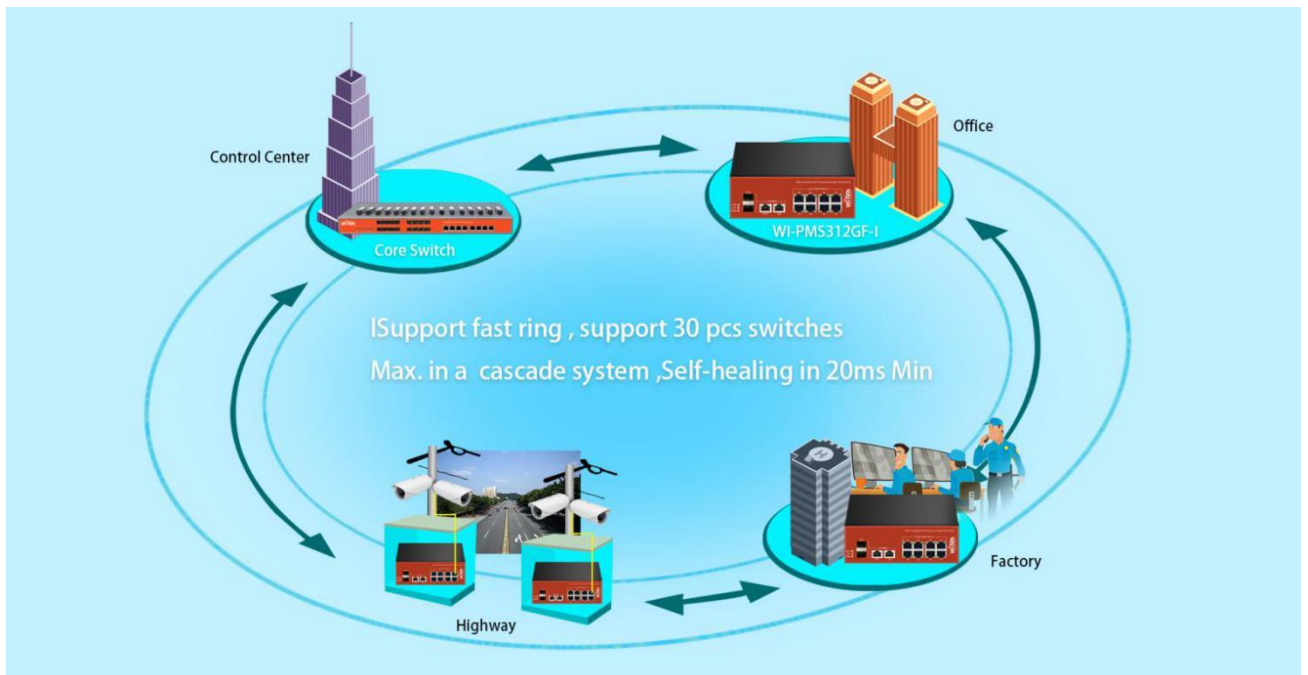
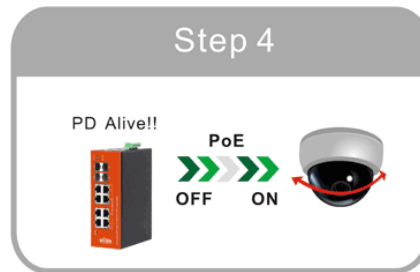
Highlights

- 10 Gigabit Ports with 8 PoE ports, 2 Combo SFP Fiber Uplink
- Buffer reaches 4Mbit, Support 4K high-definition video transmission
- Port 1-2 support 24V/48V PoE auto detect, Port 3-4 Support 802.3bt 60W PoE, Port 5-8 Support 802.3af/at 30W PoE
- Support Smart PoE Watchdog Function for PD alive check
- Support 250meters Long-Range PoE Switch
- Support fast ring, support 30 pcs switches Max. in a cascade system, Self-healing in 20ms Min
- Industrial Level 4 Protection (ESD, RS, EFT, CS)
- -40°C ~ 80°C working temperature
- IEEE802.3af (15.4W) and IEEE802.3at (30W) and IEEE802.3bt(60W)



Typical Application

Smart PoE Watchdog Function for PD Alive Check



Product

Description

what this product does

WI-PS310GF-I is 8GE+2 Combo SFP Ports Industrial Full Gigabit PoE Switch. Provide 10*10/100/1000Base-T Ethernet ports, 2*1000BASE-X SFP ports(Uplink). The switch provides up to 4Mbit cache, Support 4K high-definition video transmission; Working temperature -40°C ~ 80°C, strong level of protection from lightning, anti-interference. It fully satisfies the needs of security video surveillance project.

High Performance

WI-PS310GF-I Gigabit Ethernet Switch provides 10 100/1000Mbps Auto-Negotiation RJ45 ports. All ports support Auto MDI/MDIX function, eliminating the need for crossover cables or Uplink ports. Featuring non-blocking switching architecture, WI-PS310GF-I forwards and filters packets at full wire-speed for maximum throughput. With 10K Jumbo frame, the performance of large files transfers is improved significantly. And IEEE 802.3x flow control for Full Duplex mode and back pressure for Half Duplex mode alleviate the traffic congestion and make WI-PS310GF-I work reliably.

Easy to Use

The auto features of this Ethernet switch make installation plug and play and hassle-free. No configuring is required. Auto MDI/MDIX eliminates the need for crossover cables. Auto-negotiation on each port senses the link speed of a network device (100, 1000 Mbps) and intelligently adjusts for compatibility and optimal performance.

Specification

HARDWARE FEATURES

Interface	<p>10 100/1000Mbps RJ45 Ports 2 1000M SFP Fiber Ports</p>
Network Media	<p>10Base-T: Pair 2 Category 3(Cat3) and above UTP/STP(≤100m) 100Base -TX: Pair 2 Category 5(Cat5) and above UTP/STP(≤100m) 1000Base-T: Pair 4 Category 5(Cat5e) and above UTP/STP(≤100m) 1000Base-SX:62.5μm/50μm MMF(2m~550m) 1000Base-L X:62.5μm/50μm MM(2m~550m) or 10μm SMF(2m~5000m)</p>
Fan Quantity	Fanless
Surge Immunity	8KV Per: IEC61000-4-5
ESD Protection	<p>ESD Level 4 Per: IEC61000-4-2 RS Level 4 Per: IEC61000-4-3 EFT Level 4 Per: IEC61000-4-4 CS Level 4 Per: IEC61000-4-6</p>
External Power Supply	<p>DC 12-37V 8A Max for Non-PoE DC 37-57V 8A Max for PoE</p>
PoE Ports (RJ45)	Port1-2 Standard:

HARDWARE FEATURES

	24V Passive /48V 802.3af/at Port3-4 Standard: 802.3bt 60W compliant Port5-8 Standard: 48V 802.3af/at 30W compliant
Backbound Bandwidth	20Gbps
Mac Address Table	8K
Packet Buffer Memory	17.8Mb
Jumbo Frame	10240 Bytes
Dimensions	200mm*140mm*50 mm(L*W*H)

SOFTWARE FEATURES

Transmission Method	Store-And-Forward
Advanced Functions	Priority Function Mac Address Auto-Learning And Auto-Aging Store and forward IEEE 802.3x flow control for Full-duplex Mode Backpressure for Half-duplex Mode

OTHERS	
Certification	CE, FCC, RoHS
Package Contents	POE Switchr Screw Driver Guide Book/Warranty Card
Environment	Working Temperature: -40°C~80°C Storage temperature : -40°C~90°C Working Humidity : 10%~90% RH non-condensing Storage Humidity: 5%~95% RH non condensing



WIRELESS-TEK TECHNOLOGY LIMITED
 www.wireless-tek.com
 Email: sales@wireless-tek.com
 Technical Support: tech@wireless-tek.com